

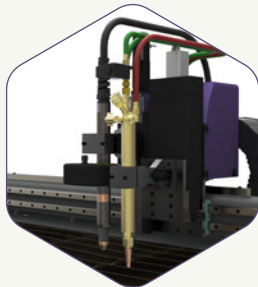
# » HORNET SS



## BIG PRODUCTIVITY IN A COMPACT DESIGN

The **HORNET SS** cutting machine is a heavy-duty unitized system that will deliver years of unmatched performance, and is an excellent plasma cutting machine at a great price. Dependable and versatile, it's the ideal choice for job shops, maintenance shops, ornamental iron shops, and technical schools.

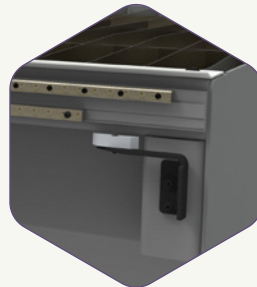
### FEATURING



#### UNITIZED INDUSTRIAL CUTTING

Unitized design for quick installation to get you cutting faster.

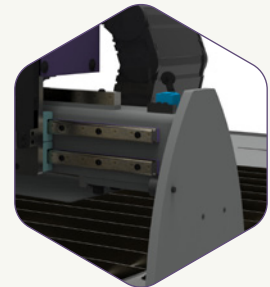
- Can be configured with integrated water or downdraft air cutting table
- On board plasma cutting, oxy-fuel cutting and marking for customizable performance



#### DURABLE PERFORMANCE

Heavy duty components will deliver decades of unmatched performance.

- Wide heavy-duty fabricated end truck
- Heavy-wall steel tubing machine frame
- Machined assembly surfaces
- Structured with gear rack facing downward and enclosed cable carriers



#### HIGH POWERED FLEXIBILITY

Small operations can harness the power of high-grade industry functionality.

- Powerful AC servo motors
- Premium motion control and cutting accuracy
- Long-lasting, dependable operation

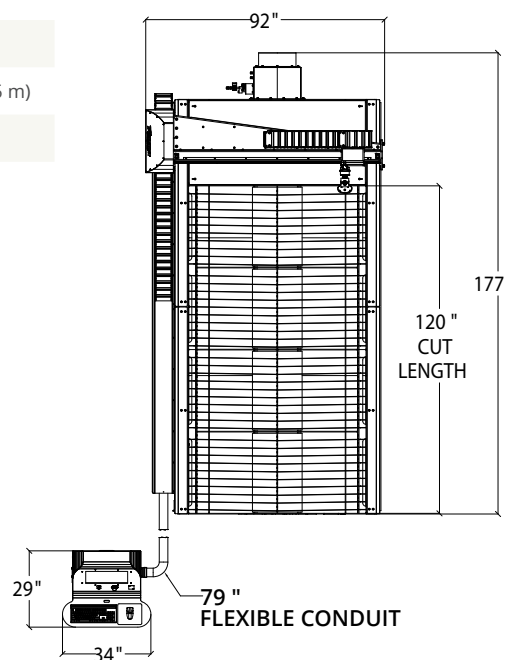
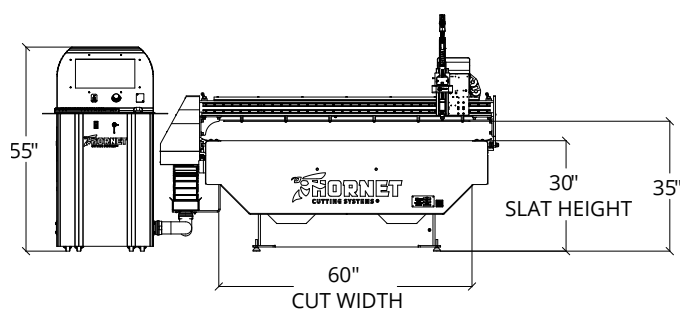
# MACHINE SPECIFICATIONS

**Positioning Accuracy**    **Repeatability**  
 +/- .010" (.25 mm)\*    +/- .001" (.025 mm)\*

\* Measured in a 60" x 60" area (1.5 m x 1.5 m)

<b>Effective Cutting Width</b>	60" (1.52 m)
<b>Effective Cutting Length</b>	120" (3.05 m)
<b>Overall Machine Height</b>	61" (1.54 m)
<b>Cutting Table Slat Height</b>	30" (0.76 m) air tables / 29" (0.74 m) water table
<b>Heat Shield Distance from Floor</b>	35" (0.89 m)
<b>Clearance Under Gantry</b>	5" (0.13 m) air tables / 6" (0.15 m) water table
<b>Machine Frame Width without CNC</b>	93" (2.36 m)
<b>Machine Frame Length without CNC</b>	165" (4.19 m)
<b>Maximum Traverse Speed</b>	1000 IPM (25.4 mpm)
<b>Maximum Number of Stations</b>	2
<b>Plasma Torches-Max</b>	1
<b>Oxy-fuel Torches-Max</b>	1
<b>Air Scribe Marker-Max</b>	1
<b>Recommended Plasma Systems</b>	Hypertherm® Powermax series
<b>Maximum Number of Oxy-Fuel Stations</b>	1
<b>Maximum Table Capacity (Full Sheet)</b>	1,500 lb (680 kg) 3/4"x 60"x 120" (0.02 m x 1.52 m x 3.05 m)
<b>Machine Input Power</b>	200-240 VAC   1-Phase   50/60 Hz Dedicated Circuit

Specifications are subject to change



Visit [HornetCS.com](http://HornetCS.com) or call **1-844-209-5552** to request a quote



POWERED BY **Hypertherm**

SS09302018

TF 844-209-5552    430 W Clay  
 P 316-755-3683    Valley Center, KS 67147  
 F 316-755-1675    [Info@HornetCS.com](mailto:Info@HornetCS.com)

A Service-Disabled Veteran-Owned Small Business  
 ISOQAR Quality Assured ISO 9001 Certificate #14037ASR001