



ORBITAL WELDING

Industrial Solutions & Innovation, LLC
4425 Mustang Rd.
Alvin, TX 77511
281-824-0356
www.industrialsolutions-llc.com



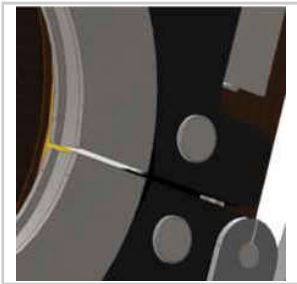
Join experience



6 - 40 mm
0.25" - 1.5"

- Water-cooled head
- Dual-wing opening
- Collet - stainless steel (req. 2 per diameter)
- Tungsten electrode specific to diameter
- Adjustable spring loaded system: accounts for tube "out of round"
- Variable Start Point: allows for tungsten electrode start up at all angles.
- Protection against start-up without tungsten electrode
- Compatible with AMI power sources w/ autocalibration (205, 207, 227)
- Machines are delivered in individual cases

Weight: 8.8 Kg / 19.5 lbs.



Tool-free collet fitting



Adjustable spring loaded system: accounts for tube "out of round"

Compatible

Compatible with AMI power sources (205, 207, 227 PS)



Connectors compatible to AMI power sources

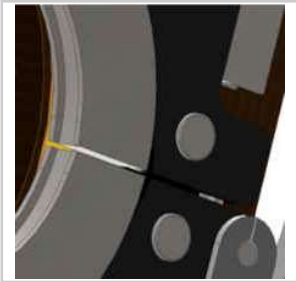
References	Accessories	Consumables
SATF-40MI	SMN40-XX Collets in mm	SCE16-XX : 1.6mm SCE24-XX : 2.4 mm



6 - 65 mm
0.25" - 2.5"

- Water-cooled head
- Dual-wing opening
- Collet - stainless steel (req. 2 per diameter)
- Tungsten electrode specific to diameter
- Adjustable spring loaded system: accounts for tube "out of round"
- Variable Start Point: allows for tungsten electrode start up at all angles.
- Protection against start-up without tungsten electrode
- Compatible with AMI power sources w/ autocalibration (205, 207, 227)
- Machines are delivered in individual cases

Weight: 9.2 Kg / 20.3 lbs.



Tool-free collet fitting



Adjustable spring loaded system: accounts for tube "out of round"

Compatible

Compatible with AMI power sources (205, 207, 227 PS)



Connectors compatible to AMI power sources

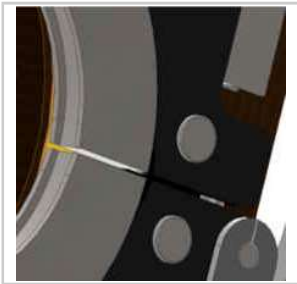
References	Accessories	Consumables
SATF-65MI	SMN65-XX Collets in mm	SCE16-XX : 1.6 mm SCE24-XX : 2.4 mm



25 - 65 mm
1" - 4.5"

- Water-cooled head
- Dual-wing opening
- Collet- stainless steel (req. 2 per diameter)
- Tungsten electrode specific to diameter
- Adjustable spring loaded system: accounts for tube "out of round"
- Variable Start Point: allows for tungsten electrode start up at all angles.
- Protection against start-up without tungsten electrode
- Compatible with AMI power sources w/ autocalibration (205, 207, 227)
- Machines are delivered in individual cases

Weight: 9.9 Kg / 21.8 lbs.



Tool-free collet fitting



Adjustable spring loaded system: accounts for tube "out of round"

Compatible

Compatible with AMI power sources (205, 207, 227 PS)



Connectors compatible to AMI power sources

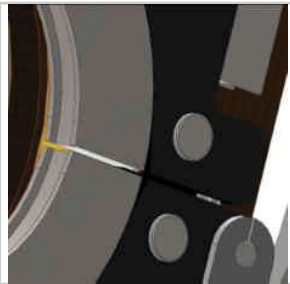
References	Accessories	Consumables
SATF-115MI	<p>SSED-16: offset tungsten electrode support 1.6 mm offset range 4 to 7.5 mm</p> <p>SSED-24: offset tungsten electrode support 2.4 mm offset range 4 to 7.5 mm</p> <p>SAFS-210: Wire harness extension 10 M</p> <p>SMN115-XX Collet in mm</p> <p>SATF115ND-A001: Window for SATF-115ND and MI</p> <p>SAGC-121: SATF-40 / SATF-65 / SATF-115 Handler</p>	<p>SCE16-XX : 1.6 mm</p> <p>SCE24-XX : 2.4 mm</p>



6 - 40 mm
0.25" - 1.5"

- Water-cooled head
- Dual-wing opening
- Collet - stainless steel (req. 2 per diameter)
- Tungsten electrode specific to diameter
- Adjustable spring loaded system: accounts for tube "out of round"
- Variable Start Point: allows for tungsten electrode start up at all angles.
- Protection against start-up without tungsten electrode
- Machines are delivered in individual cases

Weight: 8.8 Kg / 19.5 lbs.



Tool-free collet fitting



Remote Control Keypad



Driven by Axxair Power Supply (cf compatibility table)



Adjustable spring-loaded system: to account for tube "out of round"

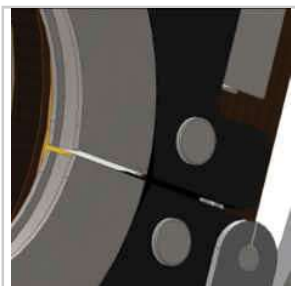
References	Accessories	Consumables
SATF-40ND	SAFS-210 : Wire harness extension 10 M SMN40-XX Collet in mm	SCE16-XX : 1.6 mm SCE24-XX : 2.4 mm



6 - 65 mm
0.25" - 2.5"

- Water-cooled head
- Dual-wing opening
- Collet - stainless steel (req. 2 per diameter)
- Tungsten electrode specific to diameter
- Adjustable spring loaded system: accounts for tube "out of round"
- Variable Start Point: allows for tungsten electrode start up at all angles.
- Protection against start-up without tungsten electrode
- Machines are delivered in individual cases

Weight: 9.2 Kg / 20.3 lbs.



Tool-free collet fitting



Remote control keypad



Driven by Axxair Power Supply (cf compatibility table)



Adjustable spring-loaded system: to account for tube "out of round"

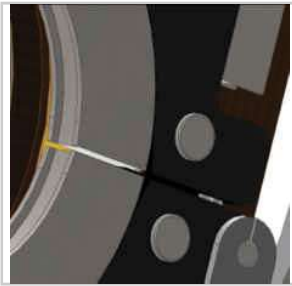
References	Accessories	Consumables
SATF-65ND	SAFS-210 : Wire harness extension 10 M SMN65-XX Collet in mm	SCE16-XX : 1.6 mm SCE24-XX : 2.4 mm



25 - 65 mm
1" - 4.5"

- Water-cooled head
- Dual-wing opening
- Collet- stainless steel (req. 2 per diameter)
- Tungsten electrode specific to diameter
- Adjustable spring loaded system: accounts for tube "out of round"
- Variable Start Point: allows for tungsten electrode start up at all angles.
- Protection against start-up without tungsten electrode
- Machines are delivered in individual cases

Weight: 9.9 Kg / 21.8 lbs.



Tool-free collet fitting



Remote Control Keypad



Driven by Axxair Power Supply (cf compatibility table)

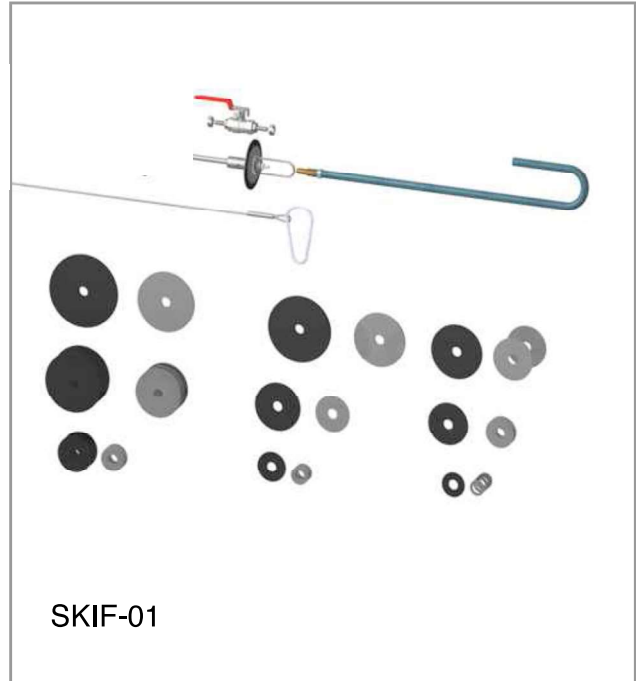


Adjustable spring-loaded system: to account for tube "out of round"

References	Accessories	Consumables
SATF-115ND	SAFS-210 : Wire harness extensions 10 M SMN115-XX Collet in mm	SCE16-XX : 1.6 mm SCE24-XX : 2.4 mm



SKIB-01



SKIF-01



SSED



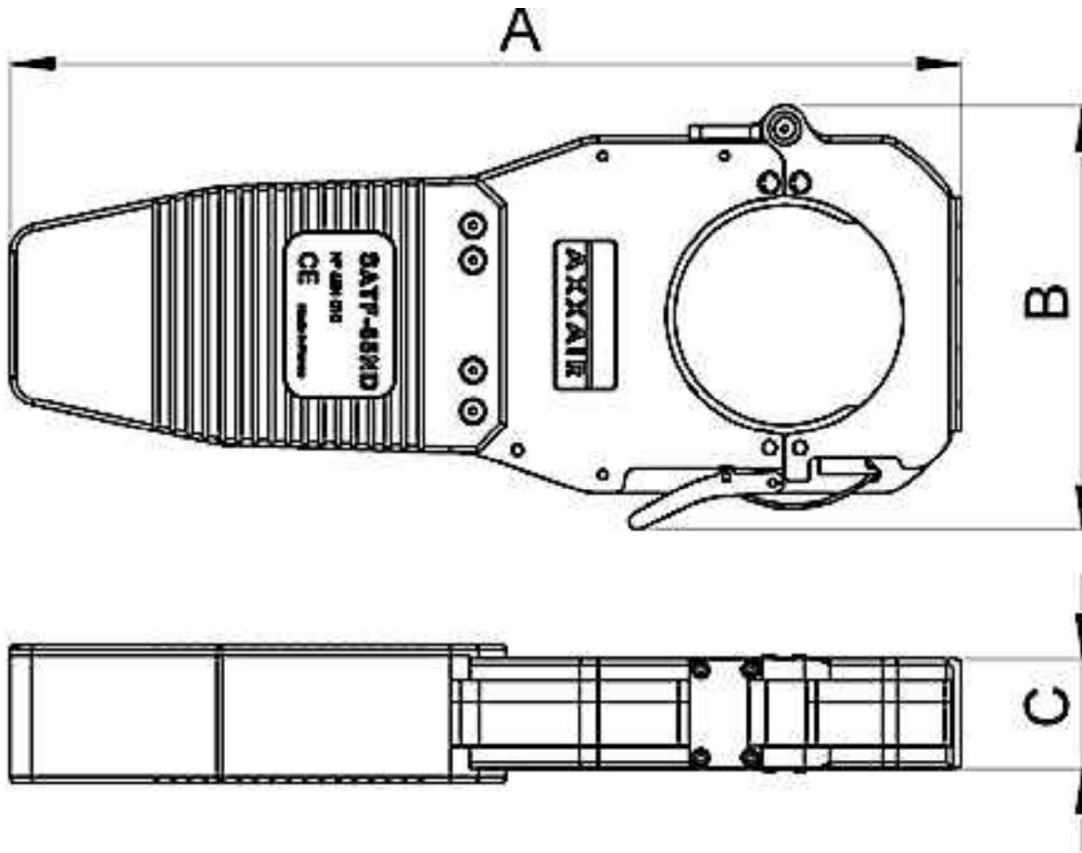
SMN40-xx
SMN65-xx
SMN115-xx





VAL-CO05

Accessories	Consumables	Options
VAL-CO05: Protection case for shipping & storage for SATF models	SMN40-xx Collets in mm	SSED-16: offset tungsten electrode support 1.6 mm offset range 4 to 7.5 mm
SAFS-210: Wire harness extensions 10 M	SMN65-xx Collets in mm	SSED-24: offset tungsten electrode support 2.4 mm offset range 4 to 7.5 mm
SKIP-01: Gas protection kit - plugs 6 to 41 mm	SMN115-xx Collets in mm	SATFxxxND-A001: Window for SATF-xxx ND and MI models
SKIF-01: Gas protection kit - membranes 40-120 mm		

INNOVATIVE ORBITAL SOLUTIONS



	A mm	B mm	C mm	Ø min	Ø max		
SATF-40ND	316	124	40	6 mm	40 mm	8,8 kg	< 70 dB
SATF-65ND	346	154	40	6 mm	65 mm	9,2 kg	< 70 dB
SATF-115ND	401	218	40	25 mm	115 mm	9,9 kg	< 70 dB